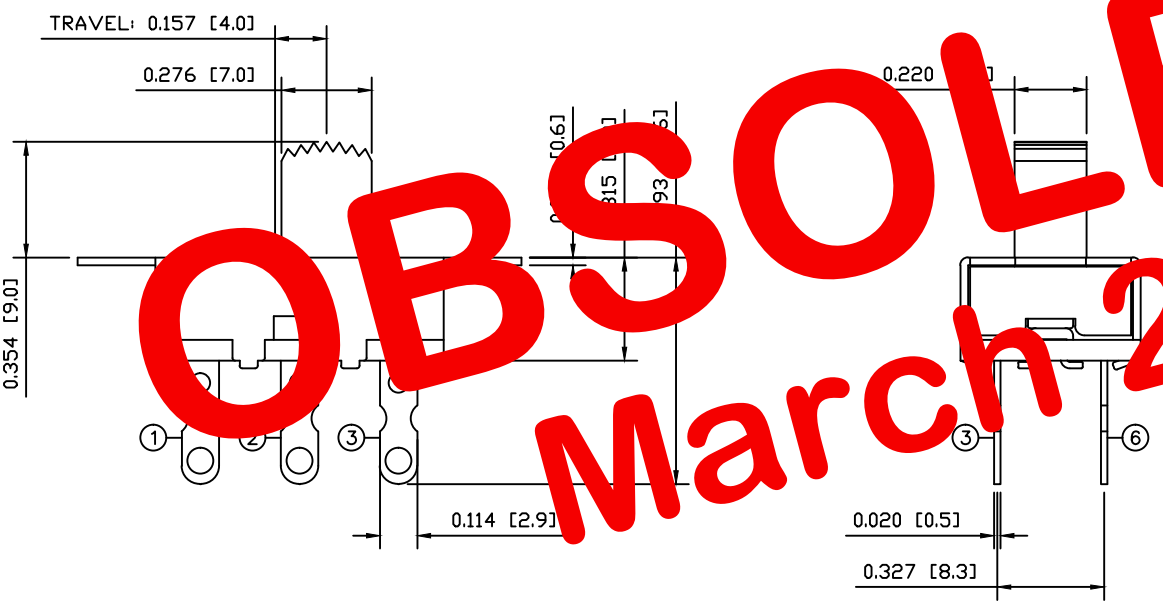


COLORS  
BODY: Metallic  
ACTUATOR: Black

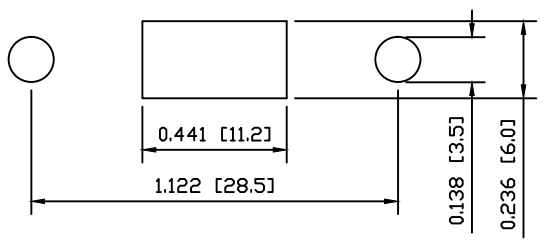
SPECIFICATIONS  
FUNCTION: 2P2T ON-ON Non-Shorting  
RATINGS: 11A 125VAC, 5.5A 250VAC  
CONTACT RESISTANCE: Initial: 30mΩ Max. at 50VDC  
INSULATION RESISTANCE: 500MΩ Min.  
DIELECTRIC STRENGTH: 1,000VAC For 1 Minute  
MECHANICAL LIFE: 10,000 Cycles  
ELECTRICAL LIFE: 10,000 Cycles  
TEMPERATURE: -30° to 105°C



MATERIALS  
UPPER BODY: Steel  
BASE: Phenolic Board, UL94 V-0  
ACTUATOR: Polyphenylene Oxide  
CONTACTS: Silver  
TERMINALS: Silver Plated Copper



SUGGESTED PANEL CUTOUT



**OBSOLETE**  
**March 2015**

UNLESS OTHERWISE SPECIFIED, DIMENSIONS ARE IN INCHES [MILLIMETERS] TOLERANCES ARE:  
DEC .X±0.2 ANG ± 1°  
.XXX±0.008 DRAWING NOT TO SCALE  
DRAWN BY: STACEY CHRISTIANSON

LAMB INDUSTRIES P.O. Box 25110 Portland, OR 97298  
LAST REVISION: OCT. 1, 2008  
DRAWING NUMBER: 03-LSU11-220002A9.dwg  
LSU11-220002A9